

## EPDM tapes for waterproof building insulation

Waterproof insulation tape for the joints of the door frame or window frame and the wall as well as for the joints of the facade cladding panels with a metal or wooden construction



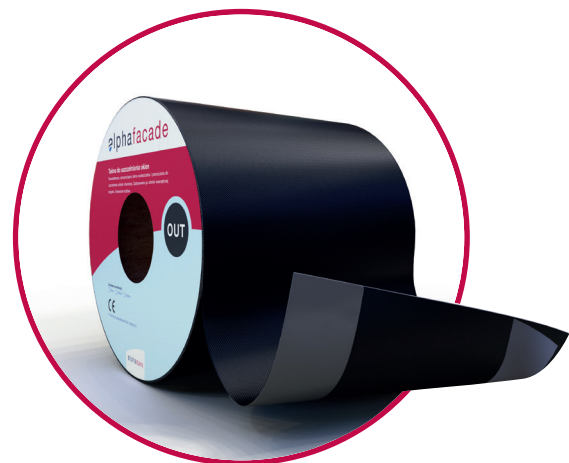
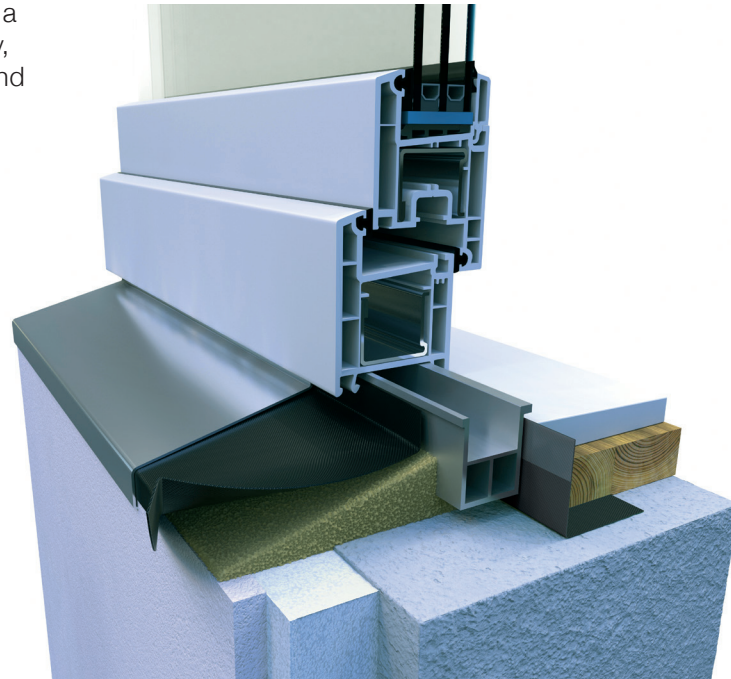


# alphafacade

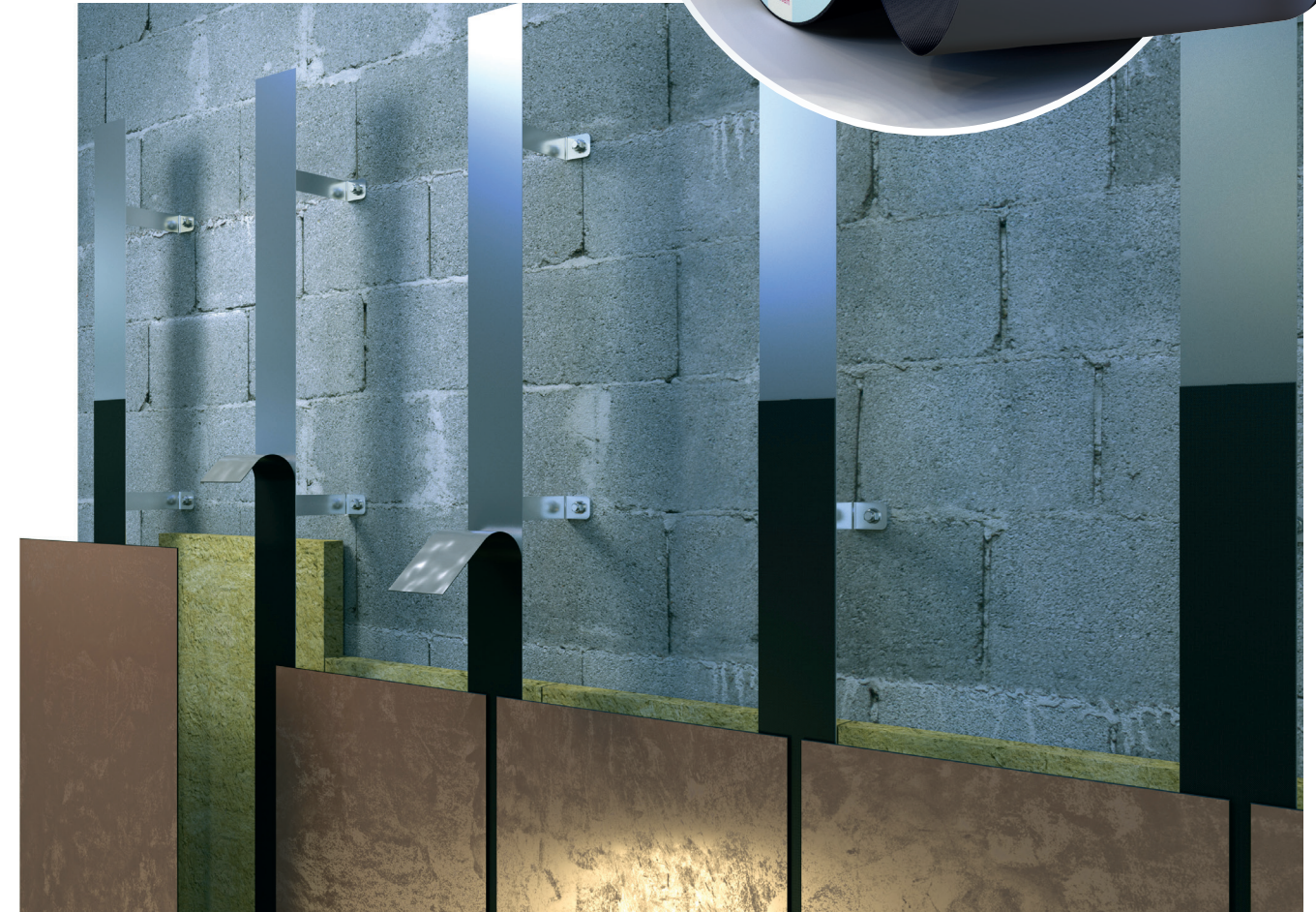
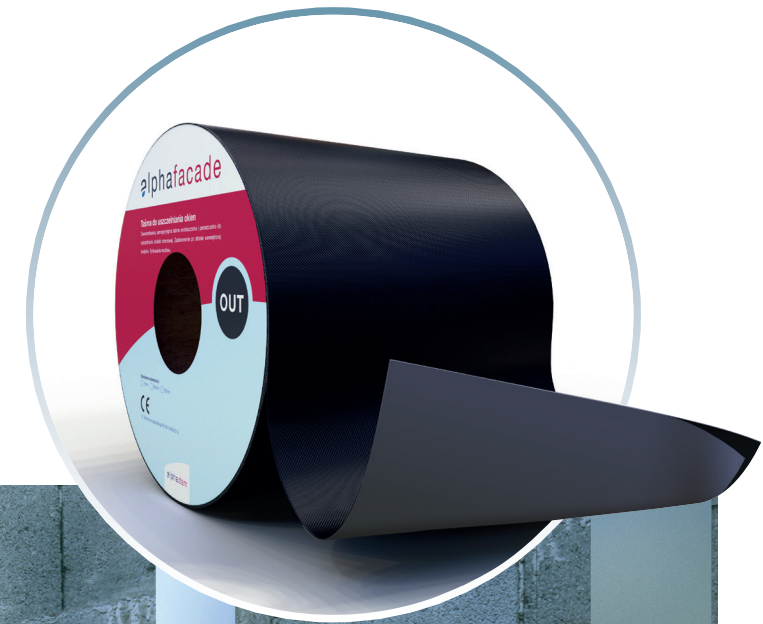
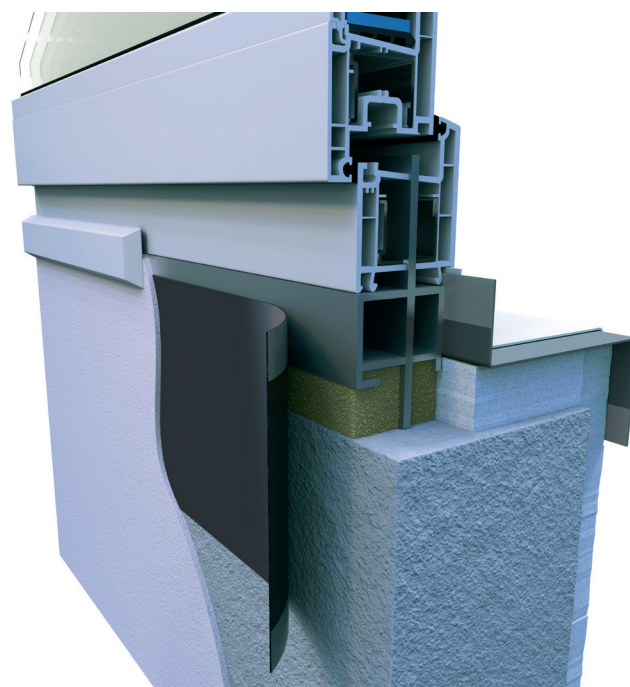
## EPDM tapes for waterproof building insulation

Waterproof insulation tape for the joints of the door frame or window frame and the wall as well as for the joints of the facade cladding panels with a metal or wooden construction

- EPDM sheet **AlphaFacade** can be used as a moisture barrier between the window joinery, door frame, balcony frame, all kinds of sill and the wall (wall, façade).



- Mechanical assembly (with stitches to wooden subframe) or using adhesive for a mechanical joint of window or door frames and the wall.



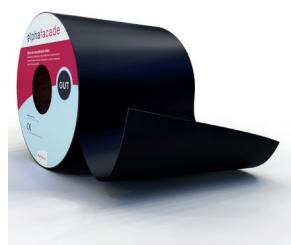
- **AlphaFacade** tape is installed under wall cladding panels on subframe between non-continuous systems of traditional facade coverings and contemporary systems of vented facades to prevent penetration of runoff waters through the facade, migration of water from joints of facade cladding system and to prevent moisture penetration inside the structure of the internal wall and directing it outside the building.
- An additional function of **AlphaFacade** is an easier movement of subframe and facade cladding system, resulting from changes of temperature and moisture.
- Assembly under each gap between the panels.



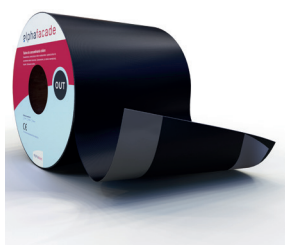
# alphafacade

## EPDM tapes for waterproof building insulation

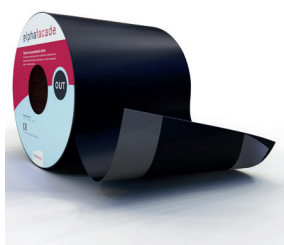
Waterproof insulation tape for the joints of the door frame or window frame and the wall as well as for the joints of the facade cladding panels with a metal or wooden construction



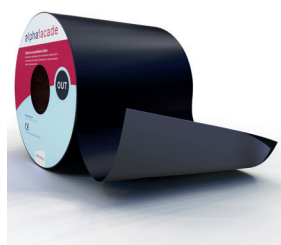
**AlphaFacade**  
pure



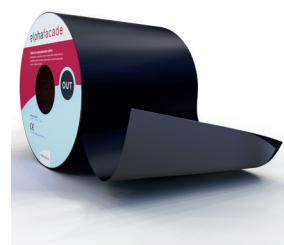
**AlphaFacade**  
with a butyl  
adhesive tape



**AlphaFacade**  
with an acrylate  
adhesive tape



**AlphaFacade**  
with a butyl adhesive  
tape over full back



**AlphaFacade**  
with an acrylate adhesive  
tape over full back

### **AlphaFacade**, Technical Data Sheet:

|   |                          |                          |
|---|--------------------------|--------------------------|
| Thickness   | mm                       | 0.750 (±5%)              |
| Water tightness   | 100 kPa Method B         | watertight               |
| Resistance to static loads  | kg                       | ≥ 20                     |
| Resistance to impacts   | mm method A              | ≥ 2000                   |
| Flexural strength in low temperatures   | °C                       | ≤ -30                    |
| Resistance to the impact of asphalt<br>(resistance determined by water tightness) | 40 kPa                   | watertight               |
| Durability  |                          |                          |
| • water tightness after artificial ageing   |                          |                          |
| • in alkali environment   | 2 kPa Method A           | watertight               |
| Resistance to tearing (nail)  |                          |                          |
| • longitudinal direction  | N                        | ≥ 140                    |
| • transverse direction  | N                        | ≥ 160                    |
| Resistance to water vapour transmission:  |                          |                          |
| • Steam stream density  | g[kg/(m <sup>2</sup> s)] | 1.02 x 10 <sup>-8</sup>  |
| • Diffusion resistance of steam   | (m <sup>2</sup> s Pa)/kg | 2.08 x 10 <sup>+11</sup> |
| • Diffusion resistance coefficient  | μ                        | 32407.8                  |
| • Value Sd  | Sd[m]                    | 30.664                   |
| Reaction to fire  | class                    | E                        |
| Hazardous substances  | -                        | does not contain         |